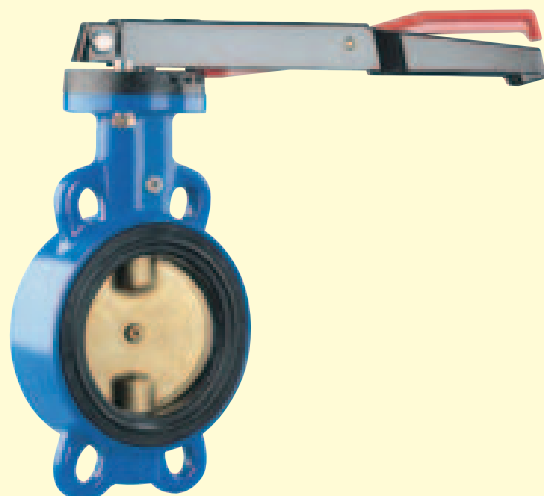


AHO Butterfly Valve PN 16

with lever or gear

JIHOMORAVSKÁ ARMATURKA

spol.s r.o.



Interflange's connection, body with lugs.
Face-to-Face as per EN 558-1 Series 20 (previously K1).

BUTTERFLY VALVES

OFFER

AHO	Operation	Lining / Disc Material	Nominal Size DN									
			50	65	80	100	125	150	200	250	300	
Type 001	lever	EPDM / stainless steel	■	■	■	■	■	■	■	■	■	■
Type 002	gear	EPDM / stainless steel	■	■	■	■	■	■	■	■	■	■
Type 011	lever	EPDM / brass	■	■	■	■	■	■	■	■	■	■
Type 012	gear	EPDM / brass	■	■	■	■	■	■	■	■	■	■
Type 031	lever	EPDM / nodular cast iron								■	■	
Type 032	gear	EPDM / nodular cast iron								■	■	■
Type 201	lever	EPDM / stainless steel	■	■	■	■	■	■	■	■	■	■
Type 202	gear	EPDM / stainless steel	■	■	■	■	■	■	■	■	■	■
Type 231	lever	EPDM / nodular cast iron								■	■	
Type 232	gear	EPDM / nodular cast iron								■	■	■

Order example: AHO type 201 DN 100

DESCRIPTION

Determination

Types 201, 202, 231 and 232 for permanent contact with potable and raw water.
Types 001, 002, 011, 012, 031 and 032 for water.
Types 031, 032, 231 and 232 for service temperature up to 80 °C, types 201 and 202 for service temperature up to 100 °C at service overpressure max. 1,6 MPa for DN 50 up to DN 150 and max. 1,0 MPa for DN 200 up to DN 300 and/or up to 130 °C at service overpressure max. 1,5 MPa for DN 50 up to DN 150 and max. 0,9 MPa for DN 200 up to DN 300.

Application

Shut-off two-way valve. The permissible flow velocity max. 2,5 m/s is allowed for service overpressure up to 0,6 MPa, max. 3 m/s for service overpressure from 0,6 MPa up to 1,0 MPa and max. 4 m/s for service overpressure from 1,0 MPa up to 1,6 MPa.

Material of Main Parts

Body from grey cast iron, disc from stainless steel 18%Cr or brass or nodular cast iron, stem from stainless steel 13%Cr, lining from EPDM rubber. Lever up to DN 150 from aluminum, from DN 200 up to DN 300 from nodular cast iron.

Corrosion Protection

Body, lever, locking lever and flange are coated with epoxy resin. Discs for types 031, 032, 231 and 232 are coated with RILSAN. Body is blue, lever is black, locking lever is red for types 001, 002, 011, 012, 031, 032 and blue for types 201, 202, 231 and 232. Disc is blue for types 031, 032, 231 and 232. Gear is coated according to manufacturer.

Operation

The closure is closed when the lever is turned through 90° to the right. The lever is adjustable each 15° and follows the disc position. It is parallel with pipeline axis in the open position. The gear is self-locking and is equipped with position indicator. End positions are limited with stops.

Installation and Maintenance

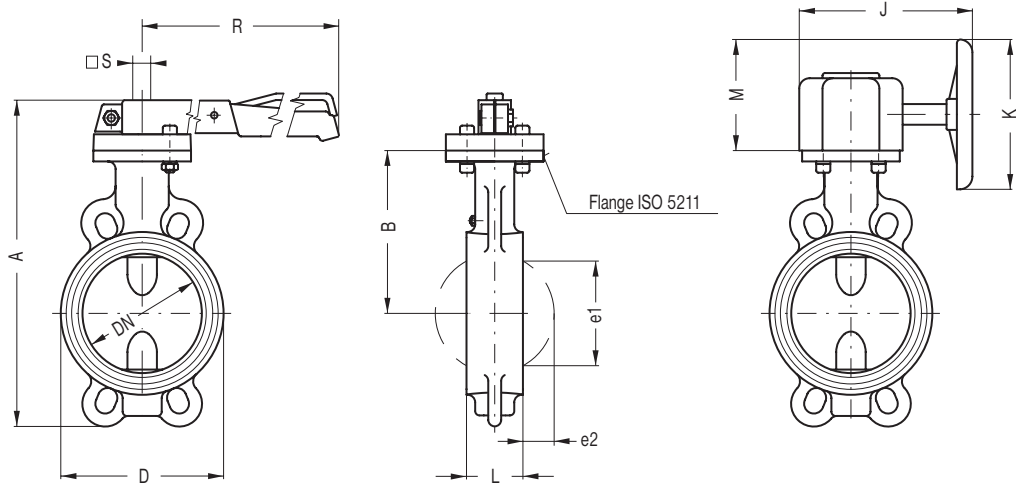
Installation is carried out by clamping between steel flanges PN 6, PN 10 and PN 16 with plane sealing surface or flanges PN 10 or PN 16 from grey cast iron and steel with a sealing face. Further details are stated in KAT 13 75-B.

Testing

Tested with water as per DIN 3230 Part 4.

Modifications are possible upon agreement.

DIMENSIONS (mm)



BUTTERFLY VALVES

6

Nominal Size	DN	50	65	80	100	125	150	200	250	300
Face-to-Face	L	43	46	46	52	56	56	60	68	78
Dimensions	A	219	239	280	299	326	355	448	488	
	B	113	123	140	150	162	175	232	250	300
	D	90	112	132	150	178	205	262	315	371
	e1	30	55	68	88	114	142	193	239	299
	e2	4,5	13	18	25	35,5	48	71	90	110,5
	J	203	203	203	203	203	203	320	320	320
	K	125	125	125	125	125	125	250	250	250
	M	90	90	90	90	90	90	155	155	155
	R	280	280	280	280	280	280	330	330	
	S	14	14	14	14	17	17	22	22	
Loss Factor ¹⁾		0,45	0,37	0,35	0,32	0,31	0,30	0,29	0,29	0,28
Weight (kg)	Type 001	2,9	3,6	4,5	5,8	7,8	9,0	17,8	26,6	
	Type 002	4,7	5,3	6,2	7,5	9,6	10,8	19,8	28,3	37,5
Flange ISO 5211		F 07	F 07	F 07	F 07	F 07	F 07	F 07	F 10	F 10
Operating Torque (N.m)		25	30	50	80	120	170	240	350	500

¹⁾ Measured in the fully open position.
 Dimensions and weight of gear can be different depending on the brand.

KAT 13 75-A Part 1, edition 1

Manufacturer: Jihomoravská armaturka spol. s r. o.

Group:  **VAG-Armaturen GmbH**
 **Bopp & Reuther Group**