

HOD Tapping Bridge PN 16 without closure

for plastic pipelines

JIHOMORAVSKÁ ARMATURKA spol.s r.o.



Predominantly for upper drilling of water free pipeline. It is allowed to use the drill max. $\varnothing 25$ for G1", max. $\varnothing 30$ for G1¼" and max. $\varnothing 38$ for G2".

OFFER

HOD	Inside thread in the Body	Nominal Size DN											
		50	65	80	100	125	150	200	250	300	350	400	
Type 507	G1"	■	■										
	G1¼"	■	■	■	■		■	■					
	G2"			■	■	■	■	■	■	■			

Order example: HOD type 507 G1" DN 50

DESCRIPTION

Determination

For permanent contact with potable water.
Max. service overpressure 1,6 MPa up to 50 °C.

Application

For drilling of water pipeline and following installation of house water service pipe.

Material of Main Parts

The Body and the Sleeve from nodular cast iron, screws and washers and nuts from stainless steel, sealing from EPDM rubber.

Corrosion Protection

Heavy surface protection. Parts from nodular cast iron are coated outside and inside with layer of blue epoxy resin.

Installation and Maintenance

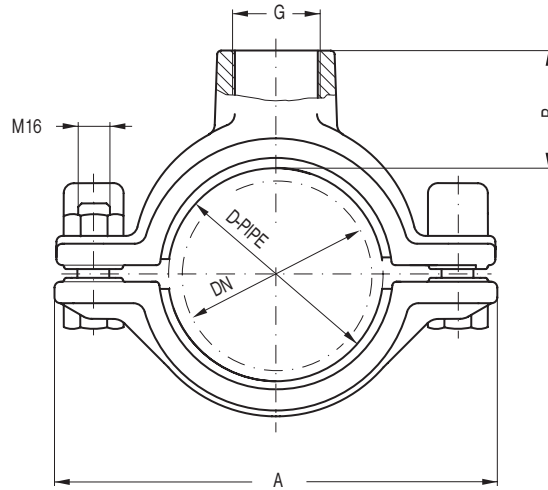
HOD Tapping Bridge position on the water pipeline is not prescribed.
Further details are stated in KAT 18 85-B and Pipeline Drilling – Working Procedure.

Testing

Tested with water as per DIN 3230 Part 4.

Modifications are possible upon agreement.

DIMENIN



A PPINGBRIDGEENNEIN

4

Tapping Bridge	Inside thread in the Body	A	B	Weight (kg)
DN 50	G1"	130	51	1,9
	G1 1/4"			1,8
DN 65	G1"	142	51	2,0
	G1 1/4"			1,9
DN 80	G1 1/4"	210	61	5,4
	G2"			6,0
DN 100	G1 1/4"	230	61	6,4
	G2"			6,8
DN 125	G2"	260	61	8,1
DN 150	G1 1/4"	280	61	8,2
	G2"			8,3
DN 200	G1 1/4"	350	61	12,0
	G2"			11,8
DN 250	G2"	400	61	13,8
DN 300	G2"	440	61	15,1

Sleeve width 70 for DN 50 and DN 65, 130 for DN 80 up to DN 300.

KAT 18 85-A Part 11, edition 1.

Manufacturer: Jihomoravská armaturka spol. s r. o.

Group:



VAG-Armaturen GmbH

Bopp & Reuther Group