

Domestic Water Meter

Elin Wasserwerkstechnik



Water Meter MTM for cold water



Features

- Nominal diameter DN15 to DN50
- Cold water up to 30°C (safe up to 50°C)
- Operating pressure up to 16 bar
- Control pressure 25 bar
- Horizontal installation
- Dry dial multi-jet wheel cold water meter
- Metrological class B
- Very good initial sensibility
- Excellent measuring results and long stability
- With protection against magnetic manipulation
- At the dry dial type optimal working security is ensured also for polluted and corrosive potable water
- The high capacity magnetic clutch gives permanent and slipless momentum
- Inset filter
- Possibility for internal flow restrictor utilization
- The smallest reading value of the counter device is 0.05 litre
- Hermetically sealed counter device
- Plastic based coating of high strength ensures corrosion protection

DIEHL
Hydrometer Gruppe

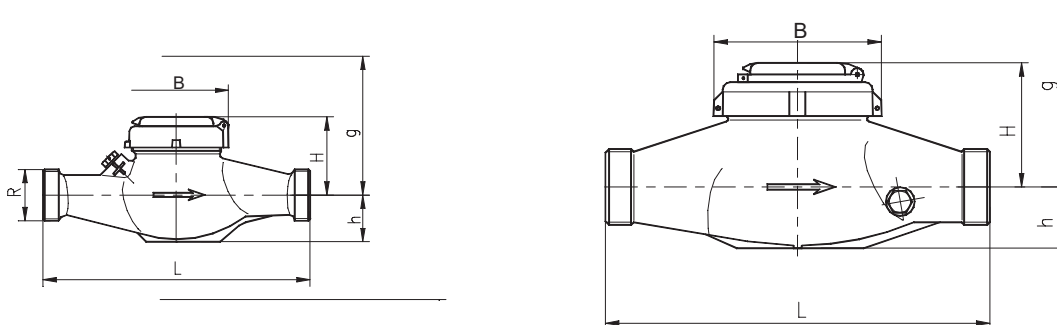


Water Meter MTM for cold water

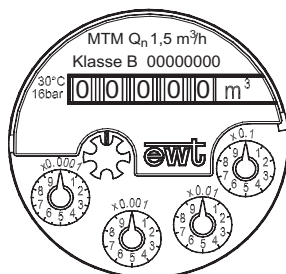
Type	MTM								
Nominal diameter	DN	mm	15	20	25	30	30	40	50
Nominal volumetric flowrate	Q_n	m ³ /h	1.5	2.5	3.5	5	6	10	15
Maximal volumetric flowrate	Q_{max}	m ³ /h	3	5	7	10	12	20	30
Flowrate at $\Delta P=1\text{bar}$		m ³ /h	4.5	5.6	13	13	13	24.5	31.5
Transitional volumetric flowrate	Q_t	l/h	120	200	280	400	480	800	3,000
Minimal volumetric flowrate	Q_{min}	l/h	30	50	70	100	120	200	450
Initial sensibility		l/h	<10	<10	<25	<25	<25	<45	<45
Metrological class			B						
Displayed min. quantity		l	0.05						
Displayed max. quantity		m ³	99 999						
Built-in length	L	mm	165	190	260	260	260	300	270
Connecting thread	R	zoll	G 3/4	G 1	G 1 1/4	G 1 1/2 G 1 1/4	G 1 1/2 G 1 1/4	G 2	G 2 1/2
Sizes	H	mm	66	66	65	65	65	85	105
	h	mm	36	38	45	45	45	45	51
	g	mm	158	158	157	157	157	177	185
Width	B	mm	98	98	102	102	102	130	130
Weight		kg	1.3	1.6	2.8	2.9	2.9	5.2	7.0

Minor technical changes may occur in the course of further development.

Overall dimensions:



Dial:



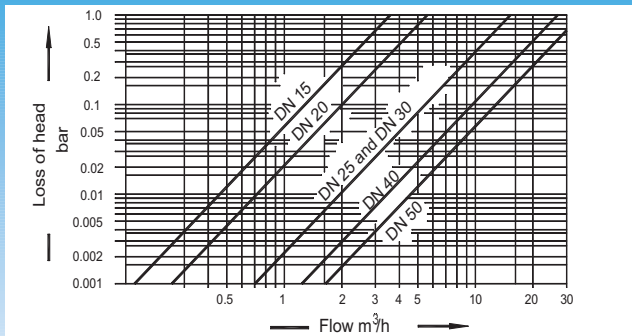
Material:

Meter body:	Brass
Counter device:	Plastic
Cover lens:	Plastic, steel
Wheel box:	Brass or plastic
Other applied material:	Stainless steel

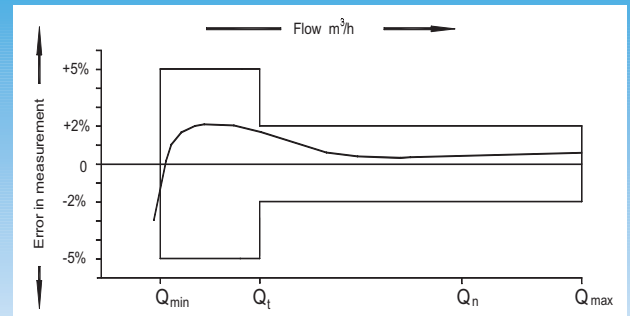


Water Meter MTM for cold water

Head loss graph MTM



Typical error graph MTM



Measuring error curve:

Error limits: In the upper measuring range between Q_{max} and Q_t ± 2 %
 In the lower measuring range between Q_t and Q_{min} ± 5 %