



PN 10...25  
DN 50...200

### Product Features

- Double chamber air valve with floating balls, directly operated by the medium
- Double orifice
- Triple function
  - large orifice for release and intake of big air volumes
  - small orifice for release of small air volumes during operation
- Final Inspection Test acc. to EN 12266 (DIN 3230 part 4)

### Materials

- Body and bonnet of ductile cast iron EN - JS 1030 (GGG-40)
- Internal parts of plastic
- Sealings of EPDM

### Corrosion Protection

- Inside and outside epoxy coating

### Field of Application

- Max. operation temperature: 50°C
- Minimum pressure for sealing: 0,5 bar



### Field of Use

**Water**

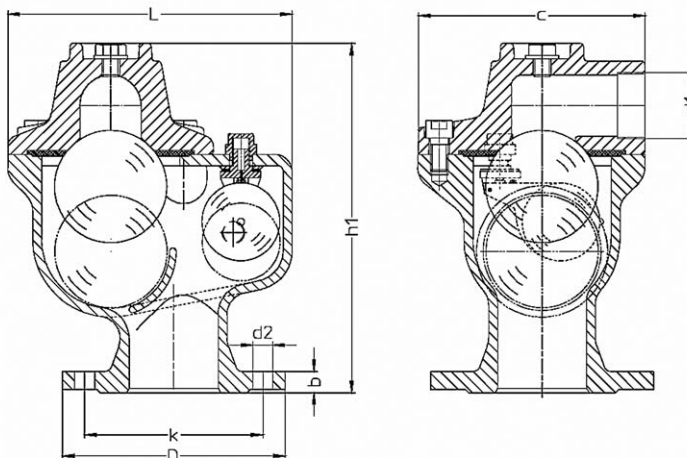
### Final Inspection Test in acc. with EN 12266

DN mm	PN bar	Max. operating pressure bar	Max. operating temperature for neutral liquids °C	Test pressure in bar with water in body and seat
200	10	10	50	15
50...200	16	16	50	24
50...200	25	25	50	37.5

We reserve the right to make technical changes and use similar or higher-quality materials. Drawings are non-binding



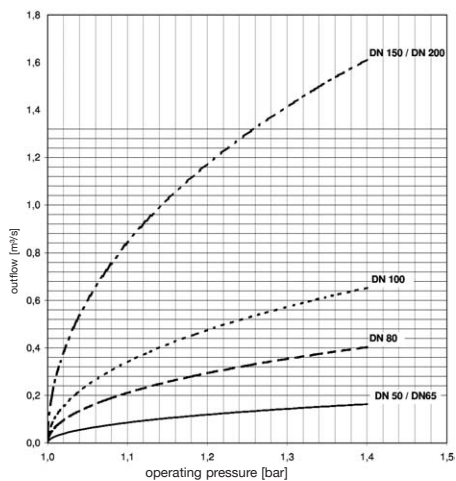
### Dimensions / weights



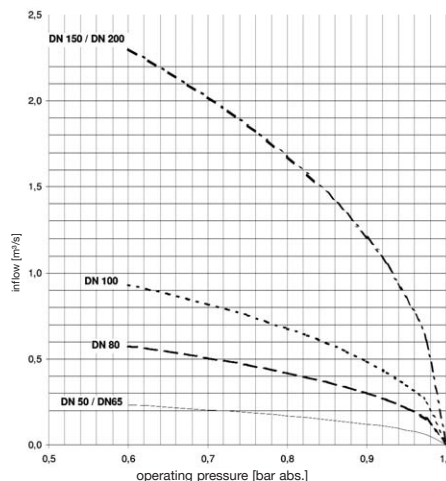
Dimensions in mm		50	65	80	100	150	200	
<b>DN</b>								
	c	156	156	185	202	260	260	
	d <sub>1</sub>	R 1 1/4"	R 1 1/4"	G 2	R 2 1/2"	R 4"	R 4"	
	h <sub>1</sub>	265	265	314	339	522	522	
	L	231	231	255.5	289	391	391	
Net weight	kg	14,4	16,5	21,0	25,8	53,	60,5	
Volume req.	m <sup>3</sup>	0,0096	0,0096	0,016	0,0198	0,053	0,053	
Flange dimensions to EN1092-2	D	165	185	200	220	285	340	
	k	125	145	160	180	240	295	
	PN 10	No. of holes	4	8	8	8	8	8
		D <sub>2</sub>	19	19	19	19	22	22
	PN 16	b	19	19	19	19	19	20
		D	165	185	200	220	285	340
	PN 25	k	125	145	160	180	240	295
		No. of holes	4	8	8	8	8	12
	PN 16	D <sub>2</sub>	19	19	19	19	19	20
		b	19	19	19	19	19	20
	PN 25	D	165	185	200	235	300	360
		k	125	145	180	190	250	310
PN 25	No. of holes	4	8	8	8	8	12	
	D <sub>2</sub>	19	19	19	22	26	26	
PN 25	b	19	19	19	19	20	22	

### Air release and air intake

**Rate of air release (large orifice)**



**Rate of air intake (large orifice)**



**Rate of air release (Small orifice for air release of small air volumes under full operation pressure)**

