

SAK Foot Valve PN 10 and Inlet Strainer PN 10

flange connection

JIHOMORAVSKÁ ARMATURKA

spol.s r.o.



Body out of grey cast iron, perforated sheet strainer out of steel, bottom without holes.
Without automatic sheet strainer cleaning.

OFFER

SAK	Product	Seats Material	Nominal Size DN											
			40	50	65	80	100	125	150	200	250	300		
Type 001	Foot Valve	brass / EPDM	■	■	■	■	■	■	■	■	■	■	■	■
Type 002	Inlet Strainer	-	■	■	■	■	■	■	■	■	■	■	■	■

Order example: SAK type 001 DN 100

DESCRIPTION

Determination

For permanent contact with potable and raw water at admissible working temperature up to 50 °C and working overpressure max. 1,0 MPa.

Application

For suction pipeline protection to prevent a penetration of mechanical impurities. The Foot Valve (suction basket) also prevents automatically self discharging of the suction pipeline.

Connecting Dimensions

Flanges drilling as per EN 1092-2, type 21, form B. Dimensions are stated in the table overleaf.

Materials of Main Parts

Body out of grey cast iron, sheet strainer, bolts, washers and nuts are from steel. Foot Valve seat in the body is from brass, back valve EPDM rubber lined.

Corrosion Protection

Heavy surface protection. All iron parts are inside and outside coated with epoxy resin – blue colour, bolts, washers and nuts are hot zinc plated.

Operation

Self acting valves.

Installation and Maintenance

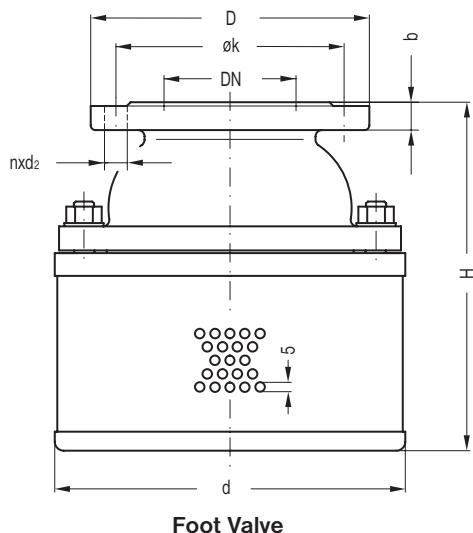
SAK foot valve to prior install in vertical pipeline, SAK inlet strainer position is not prescribed. It is necessary to clean the sheet strainer according to working conditions. Further details are stated in KAT 21 60-B.

Testing

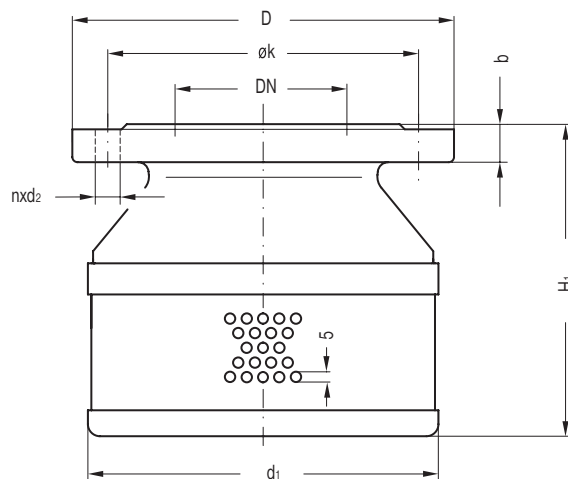
Tested with water as per DIN 3230 Part 4.

Modifications are possible upon agreement.

DIMENSIONS (mm)



Foot Valve



Inlet Strainer

Nominal Size	DN	40	50	65	80	100	125	150	200	250	300
Dimensions	d	170	180	200	240	270	310	350	440	520	
	H	165	170	200	215	275	295	375	455	505	
	d ₁	120	120	160	160	196	280	280	360	440	520
	H ₁	150	150	155	155	220	265	280	360	385	405
Connecting Dimensions	D	150	165	185	200	220	250	285	340	395	445
	k	110	125	145	160	180	210	240	295	350	400
	b	18	20	20	22	24	26	26	26	28	28
	d ₂	19	19	19	19	19	19	23	23	23	23
	Holes, off n	4	4	4	8	8	8	8	8	12	12
	Screw, size	M16	M16	M16	M16	M16	M16	M16	M20	M20	M20
Loss Factor ¹⁾	Foot Valve	3,5	3,6	3,5	3,7	3,9	4,1	3,7	4,5	5,6	
	Inlet Strainer	0,12	0,12	0,12	0,12	0,12	0,12	0,12	0,12	0,12	0,12
Weight (kg)	Foot Valve	8	10	13	15	22	33	43	70	104	
	Inlet Strainer	4	5	6	7	9	14	16	23	33	39

¹⁾ Measured with disassembled sheet strainer.

